

## 360kW Dual Motor NIO ET5 Chinese EV Car With 710km Cruising Range

Our Product Introduction

### Basic Information

- Place of Origin: China
- Brand Name: NIO
- Certification: VDA, TUV, ISO
- Model Number: ET5
- Minimum Order Quantity: 1
- Price: \$33600-35600/units
- Packaging Details: by sea, by trailer, rail via containers, LCL and RO-RO vessel
- Delivery Time: 7 working days
- Payment Terms: L/C, D/A, D/P, T/T, Western Union, MoneyGram
- Supply Ability: 1-10 units 15 - 20 working days, 10-30 units 20-30 working days, 30-50 units ≥30 working days.

R·CHENG

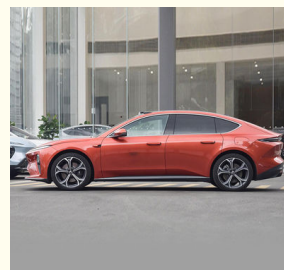
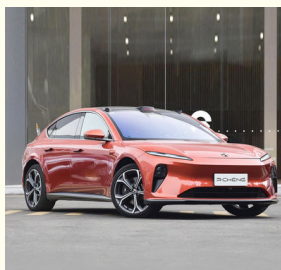
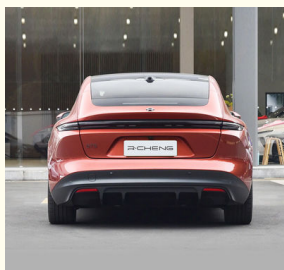


### Product Specification

- Product Name: NIO
- Steering Position: Left Hand Drive
- Battery Type: Lithium Iron Phosphate Battery
- Body Style: 5 Door 5 Seat Car
- Fuel Type: 100% Electric
- Power: 360kW Dual Motor
- Battery Energy: 100KWH
- Highlight: Chinese EV Car 710km Cruising Range, NIO ET5 Chinese EV Car, NIO ET5 710km Cruising Range



### More Images



for more products please visit us on [electriccars-ev.com](http://electriccars-ev.com)

## Product Description

## NIO ET5

Popular NIO ET5 Senior Version Electric Car with 710km Cruising Range, Fast Charging Function and Strong Power

### Product Configuration

|                           |   |
|---------------------------|---|
| Battery Capacity          | 100KWH                                      |
| Charging Time             | Fast 0.78 hour, Slow 10 hours               |
| Motor Power               | 360kW/490ps                                 |
| MAX. Range                | 710 km                                      |
| MAX. Speed                | 200 km / h                                  |
| Vehicle Weight            | 2185KG                                      |
| Tyre Specifications       | 245/45 R19                                  |
| Length*Width*Height       | 4790x1960x1499 mm                           |
| Driving Direction         | Left-hand Drive                             |
| Body Structure            | 4 Doors, 5 Seats                            |
| Battery Type              | Ternary Lithium Battery                     |
| Steering Wheel Assistance | Electric Steering Wheel Assist              |
| Light Type                | LED   |
| Battery Warranty          | Unlimited Years/Mileage For The First Owner |
| Motor Torque              | 280+420 n.m(dual motor)                     |
| Wheelbase                 | 2888 mm                                     |
| Seat                      | 5   |
| Front Suspension          | Multi-link Independent Suspension           |
| Rear Suspension           | Multi-link Independent Suspension           |
| Steering System           | Electric                                    |
| Parking Brake             | Electric                                    |
| Braking System            | Front Disc +Rear Dsic                       |
| ABS                       | Yes   |
| ESC                       | Yes   |
| Radar                     | 18 pcs Rear                                 |
| After The Camera          | 360°  |
| Skylight                  | Sunroof                                     |
| Steering Wheel            | Multi-function                              |
| Seat Material             | Leather                                     |
| Driver Seat Adjustment    | Electric                                    |

|                           |          |
|---------------------------|----------|
| Passenger Seat Adjustment | Electric |
| Touch Screen              | Yes      |

Product Description



**Inherit the high performance gene of Nio brand**

4s 0-100km/h acceleration  
33.8m 100km braking  
1000km CLTC endurance mileage

## Sliding back molding

The roof line is smooth and light, and naturally extends back



## Sliding back molding

The roof line is smooth and light, and naturally extends back

Nio family front face design

1.28m<sup>2</sup> pan-oramic glass canopy

Rimless door





### Six interior colors

The colored areas include seats, door panels, dashboard, as well as the steering wheel and seat belts.

### Nio ES8

- ▲ 12.8" Center Panel
- ▲ NOMI
- ▲ Sports seat

## NIO AUTONOMOUS DRIVING

It is our vision to make the car a safe and free mobile living space



### Ultra-long range high precision lidar

- Horizontal Angle of view 120°
- Maximum resolution 0.06°x0.06°



### Ultra-long range high precision lidar

Horizontal Angle of view 120°

Maximum resolution 0.06°x0.06°

Look sharp and ready to go

With each acceleration, we can easily split the air and ride the wind



▲ Intelligent four-wheel drive



▲ Steel and aluminum hybrid body

### Look sharp and ready to go

With each acceleration, we can easily split the air and ride the wind

- ▲ Intelligent four-wheel drive
- ▲ Steel and aluminum hybrid body

### HOT SELLING COLORS SHOW



● PINK

● GREY



● GREEN



● BLACK



● ORANGE



● YELLOW



● LIGHT BLUE



● DARK BLUE





19158810053



mango@ruichengauto.com



electriccars-ev.com

Hall 5, No. 1, Yinhe Road, Damian Street Chengdu City, Sichuan Province, China