

## Hongqi E-QM5 Electric Sedan 431km High Speed Electric Vehicle

### Our Product Introduction

#### Basic Information

- Place of Origin: China
- Brand Name: Hongqi
- Certification: VDA, TUV, ISO
- Model Number: E-QM5
- Minimum Order Quantity: 1
- Price: \$19000-20000/units
- Packaging Details: by sea, by trailer, rail via containers, LCL and RO-RO vessel
- Delivery Time: 7 working days
- Payment Terms: L/C, D/A, D/P, T/T, Western Union, MoneyGram
- Supply Ability: 1-10 units 15 - 20 working days, 10-30 units 20-30 working days, 30-50 units ≥30 working days



#### Product Specification

- Product Name: Hongqi E-QM5
- Steering Position: Left Hand Drive
- Body Style: 5-door 5-seat SUV
- Charging Time: Fast Charge 0.7 Hours, Slow Charge 7 Hours
- Dimension: 5040\*1910\*1569 Mm
- Battery Type: Ternary Lithium Battery
- Battery Capacity: 56KWH
- Motor Power: 140KW
- MAX. Range: 431 Km
- Vehicle Weight: 1800KG
- Tyre Specifications: 235/50 R18
- Highlight: Hongqi E-QM5 Electric Sedan,  
Electric Sedan 431km,  
Hongqi E-QM5 high speed electric vehicle



#### More Images



## Product Description

New Energy Vehicles Hongqi E-QM5 Quality Ev Car 431km Electric Sedan High Speed Vehicle Used Car E Vehicle Ev

### Product Configurations

Product Configurations	56 kWh
Charging Time	Fast Charge 0.7 Hours, Slow Charge 7 Hours
Motor Power	140kW
MAX. Range	431 km
MAX. Speed	130 km/h
Vehicle Weight	1800 kg
Tyre Specifications	235/50 R18
Length*Width*Height	5040*1910*1569 mm
Driving Direction	Left-hand Drive
Body Structure	5 Doors And 5 Seats
Battery Type	Ternary Lithium Battery
Steering Wheel Assistance	Electric Steering Wheel Assist
Light Type	LED
Battery Warranty	160,000 km/ In 8 Years
Motor Torque	320 N·m
Wheelbase	2990 mm
Seat	5 seats
Front Suspension	McPherson Independent Suspension
Rear Suspension	Multi-link Independent Suspension
Steering System	Electric
Parking Brake	Electronic Parking Brake
Braking System	Front Disc + Rear Dsic
ABS	Yes
ESC	Yes
Radar	Front 4+Rear 4
After The Camera	360° Image

## Hongqi E-QM5

### Product Description

# HONG QI E-QM5

Your green ideal

54kwh  
Power cell capacity

431km NEDC  
NEDC endurance mileage

140kw  
Motor power



Hongqi E-QM5

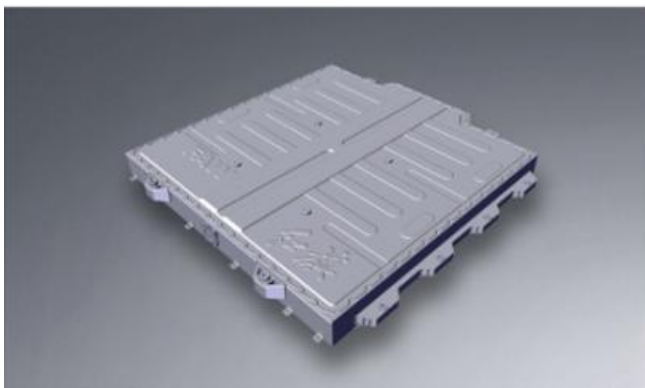


## SAFETY

Forward collision warning(FCW) and automatic emergency braking(AEB) actively work together to reduce the incidence of traffic accidents

High-strength cage-shaped architecture and torsional stiffness of 42826 Nm/°, protect the driver and passengers.

Honeycomb aluminum structure, which passed extrusion/fire tests and other 16 safety tests, strictly prevent fire and explosion.



**Hongqi E-QM5**



**Hongqi E-QM5**





**Hongqi E-QM5**

## IDEAL DRIVING FORCE

Economical and efficient electric system complies with owners' demand of adaptive kinetic energy.



**Hongqi E-QM5**

Product Color Show

## HOT SELLING COLORS SHOW



**RUICHENG** Chengdu Ruicheng Automobile Service Co., Ltd.



19158810053



mango@ruichengauto.com



electriccars-ev.com

Hall 5, No. 1, Yinhe Road, Damian Street Chengdu City, Sichuan Province, China