

## 5 Door 7 Seat ID 6 Crozz VW Electric Car Fast Charge 0.5H

Our Product Introduction

for more products please visit us on [electriccars-ev.com](http://electriccars-ev.com)

### Basic Information

- Place of Origin: China
- Brand Name: Volkswagen
- Certification: VDA, TUV ,ISO
- Model Number: Id6 Crozz
- Minimum Order Quantity: 1
- Price: \$22000-25000/units
- Packaging Details: by sea, by trailer, rail via containers, LCL and RO-RO vessel
- Delivery Time: 7 working days
- Payment Terms: L/C, D/A, D/P, T/T, Western Union, MoneyGram
- Supply Ability: 1-10 units 15 - 20 working days, 10-30 units 20-30 working days, 30-50 units ≥30 working days

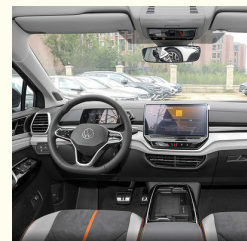
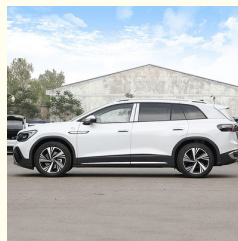


### Product Specification

- Product Name: Volkswagen Id 6 Crozz
- Steering Position: Left Hand Drive
- Body Style: 5-door 7-seat SUV
- Charging Time: Fast Charge 0.67 Slow Charge 12.5
- Dimension: 4891x1848x1679mm
- Battery Type: Ternary Lithium Battery
- MAX. Range: 601km
- MAX. Speed: 160km/h
- Vehicle Weight: 2293KG
- Tyre Specifications: 235/50 R20
- Highlight: VW Electric Car Fast 0.5H, id 6 crozz VW Electric Car, id 6 crozz Fast 0.5H



### More Images



### Product Description

China Factory Price ID6 Pure+ Pro Electric Car Electric Vehicle Automatic Suv Multicolor Long Endurance vw id6 price

### Product Configurations

Our Product

|                           |                                   |
|---------------------------|-----------------------------------|
| Battery Capacity          | 84.8KWH                           |
| Charging Time             | Fast 0.5H                         |
| Motor Power               | 150KW(204Ps)                      |
| MAX. Range                | 601KM                             |
| MAX. Speed                | 160KM/H                           |
| Vehicle Weight            | 2293KG                            |
| Tyre Specifications       | 235/50 R20                        |
| Length*Width*Height       | 4891x1848x1679mm                  |
| Driving Direction         | Left-hand Drive                   |
| Body Structure            | Five Doors and Five Seats         |
| Battery Type              | Ternary Lithium Battery           |
| Steering Wheel Assistance | Electric Steering Wheel Assist    |
| Light Type                | LED                               |
| Battery Warranty          | 160,000 km in 8 years             |
| Motor Torque              | 310n.m                            |
| Wheelbase                 | 2965mm                            |
| Seat                      | 6/7 Seats                         |
| Front Suspension          | McPherson Independent Suspension  |
| Rear Suspension           | Multi-link Independent Suspension |
| Steering System           | Electric                          |
| Parking Brake             | Electric                          |
| Braking System            | Front Disc +Rear Ddsic            |
| ABS                       | Yes                               |
| ESC                       | Yes                               |
| Radar                     | Front 4+Rear 4                    |
| After The Camera          | 360                               |
| Skylight                  | Sunroof                           |
| Steering Wheel            | Multi-function                    |
| Seat Material             | Leather                           |
| Driver Seat Adjustment    | Electric                          |
| Passenger Seat Adjustment | Electric                          |
| Touch Screen              | Yes                               |

## Volkswagen ID 6 Crozz EV

### Products Description

---

# ID6 CROZZ

Large size high-end intelligent pure electric SUV

601km  
Maximum range

5/7 SEATS  
spatial arrangement

IQ.Drive  
L2+ driver assistance system



**Large size high-end intelligent pure electric SUV**

Maximum range : 601km

Spatial arrangement : 6/7 SEATS

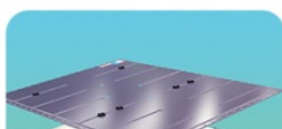
L2+ driver assistance system : IQ.Drive

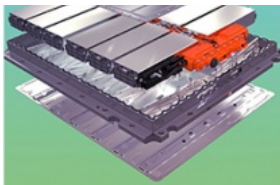




**As talented as an SUV as sustainable as an ID**

Intelligent LED headlamp  
ID. Welcome light interaction  
Large size panoramic canopy  
21 inch aluminum wheel





Battery safety



Whole vehicle safety



84.8KWh battery pack

Volkswagen Intelligent semantic interaction



Full touch steering wheel and function keys



AR HUD Augmented reality head-up display



### Elegant interior

Battery safety  
Whole vehicle safety  
84.8KWh battery pack  
Volkswagen Intelligent semantic interaction  
AR HUD Augmented reality head-up display



## PARENT-CHILD DESIGN

- A mobile living room with full quality
- 2.1 m<sup>2</sup> large glass canopy
- large area soft wrap
- PM2.5 Air filtration Clean Air 4.0
- Anion Generator



### Intelligent cockpit

Full touch steering wheel and function keys

## L2+ AUTOPILOT ASSISTANCE

- Matrix LED headlights are equipped for all series
- 12 independent light emitting units
- 10 lighting modes
- millisecond reaction rate
- Intelligent welcome mode



IQ. DRIVE



IQ. LIGHT



### Intelligent cockpit

12 inch touch screen  
AR HUD head display  
Mobile meeting room  
Super size panoramic canopy

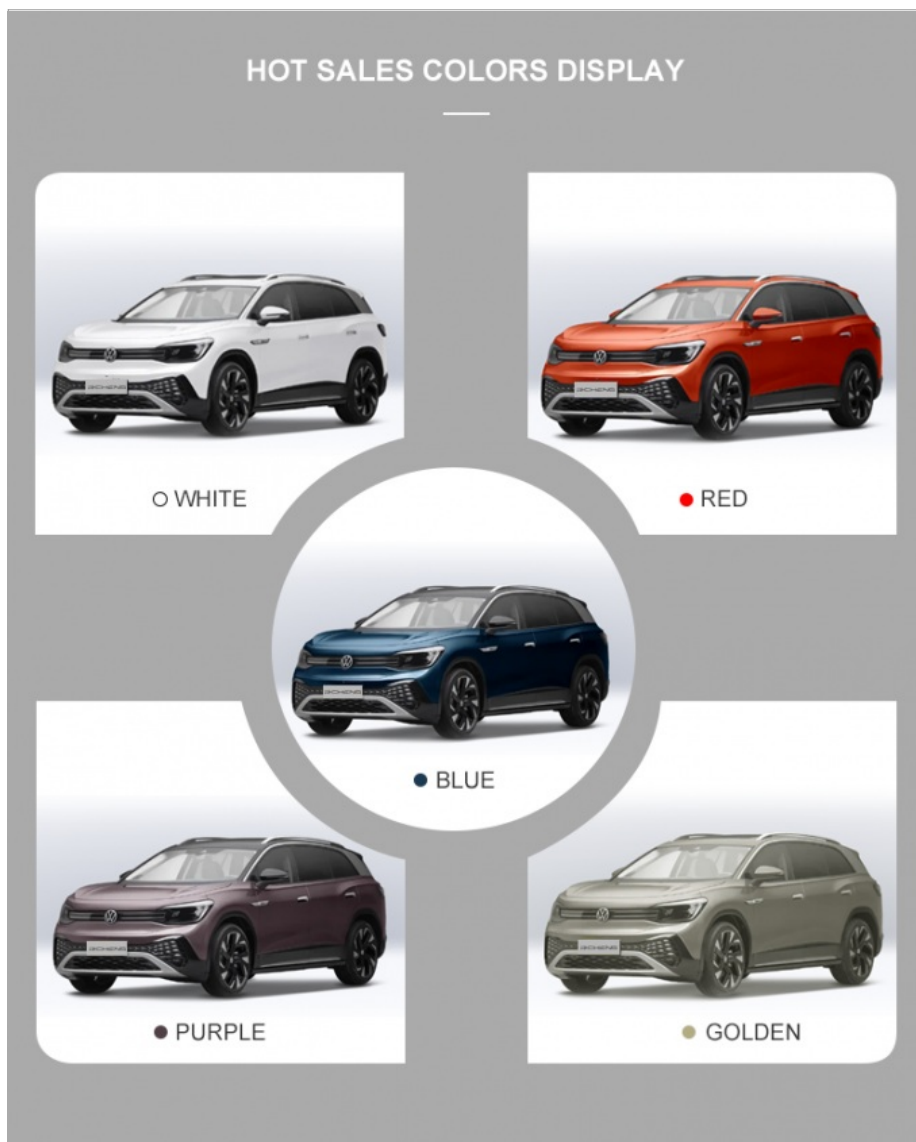




### MEB pure electric gene

Volkswagen advanced technology

### Product Color Show



**RUICHENG Chengdu Ruicheng Automobile Service Co., Ltd.**

☎ 19158810053

✉ [mango@ruichengauto.com](mailto:mango@ruichengauto.com)

🔌 [electriccars-ev.com](http://electriccars-ev.com)

Hall 5, No. 1, Yinhe Road, Damian Street Chengdu City, Sichuan Province, China



