

2023 EXEED Lingyun 300T Two Wheel Drive Starlight Vehicle Chery Exeed Tiggo 7 Pro Gasoline Car

Our Product Introduction

for more products please visit us on electriccars-ev.com

Basic Information

- Place of Origin: China
- Brand Name: EXEED
- Certification: VDA, TUV ,ISO
- Model Number: Lingyun
- Minimum Order Quantity: 1
- Price: \$20000-24000/units
- Packaging Details: by sea, by trailer, rail via containers, LCL and RO-RO vessel
- Delivery Time: 7 working days
- Payment Terms: L/C, D/A, D/P, T/T, Western Union, MoneyGram
- Supply Ability: 1-10 units 15 - 20 working days, 10-30 units 20-30 working days, 30-50 units ≥30 working days

R·CHENG

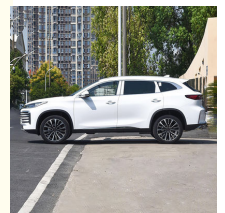
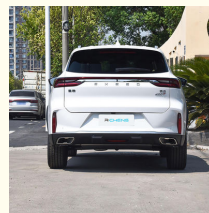
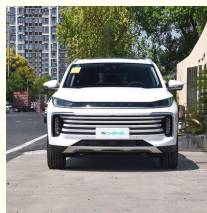


Product Specification

- Product Name: EXEED Lingyun Gasoline Car
- Length * Width * Height: 4780x1885x1730mm
- Body Structure: 5-door 5-seat SUV
- Color: White, Black, grey, Green
- Fuel: Gasoline
- Max Speed: 187km/h
- Highlight: Two Wheel Drive Starlight Vehicle, 300T Starlight Vehicle, Tiggo 7 Pro Gasoline Car



More Images



Our Product Introduction

Product Description

2023 EXEED 300T Two wheel Drive Starlight Vehicle Chery Lingyun Tiggo 7 Pro Gasoline Car

Product Configuration

Manufacturer	Chery Exeed
Level	Middle SUV
Energy	Gasoline
Time to Market	2022.09
Engine	1.6T 197 horsepower L4
Max power	145(197Ps)
Max Torque	300 N.m
Gearbox	7-gear wet dual clutch
Lengh*width*height	4780x1885x1730mm
Body Structure	5-door 5-seat SUV

Max Speed	187km/h
Fuel consumption	7.5L/100km
Warranty	3 years or 100,000 km
Weight	1650kg
Fuel tank capacity	55L
Trunk Volume	461-970
Displacement	1.6L
Air intake	turbo charging
No. of cylinders	4
Max horsepower	197Ps
Max Power	145kW
Max power speed	5500rpm
ROZ	92#,95#
Oil supply method	In cylinder direct injection
Drive	Front-engine, Front-wheel drive
Front suspension	MacPherson independent suspension
Rear suspension	Multi link independent suspension
Steering	Electric assistance
Parking Brake	Electronic
Tire	235/50 R19
ABS	Yes
tpms	Yes

Exeed Lingyun Luxury SUV



A new generation of luxury suv Chery Exeed Lingyun car made in China
 7-speed dual-clutch transmission
 2.0T GDI Brand engine
 24.6 inches Encircling true curved screen

Exeed Lingyun Panoramic Sound Surround



+++

- ▲ Nappa leather first class seats deluxe Queen's seat
- 2800mm long wheelbase, wide rear space



Nappa leather first class seats deluxe Queen's seat
2800mm long wheelbase, wide rear space

MORE DETAILS



+++

- ▲ 21 ADAS advanced driver assistance systems are standard
- 85% high strength steel cage body



21 ADAS advanced driver assistance systems are standard
85% high strength steel cage body

MORE DETAILS



► interiors may vary

ADS and High Strength Steel Cage Body



- ▲ 21 ADAS advanced driver assistance systems are standard
- 85% high strength steel cage body



Hot Sales Colors

HOT SALES COLORS DISPLAY



○ WHITE



● BLACK



● GREY



● GREEN

4 hot sale colors available: white, black, grey and green.

Brand Story

The name EXEED comes from "EXCEED".

Star Path ": Stars represent the starry sky, an unknown realm that has always been eager to explore; The journey represents a journey, a journey of continuous transcendence.

EXEED Star Path is developed, designed, and marketed by an international team, and is launched globally simultaneously.

Based on first-class design and leading technology, differentiated by artificial intelligence,

With a customer-centered service philosophy, we aim to create a brand new and leading high-end Chinese automotive brand.

Send an Inquiry to know more regarding Exeed Lingyun SUV

Chengdu Ruicheng Automobile Service Co., Ltd.

☎ 19158810053

✉ mango@ruichengauto.com

🌐 electriccars-ev.com

Hall 5, No. 1, Yinhe Road, Damian Street Chengdu City, Sichuan Province, China