

## Left Hand Drive Second Hand Cars Superb Skoda Max 210km/H Gasoline Vehicles

Our Product Introduction

for more products please visit us on [electriccars-ev.com](http://electriccars-ev.com)

### Basic Information

- Place of Origin: China
- Brand Name: Skoda
- Certification: VDA, TUV ,ISO
- Model Number: Superb
- Minimum Order Quantity: 1
- Price: \$18000-23000/units
- Packaging Details: by sea, by trailer, rail via containers, LCL and RO-RO vessel
- Delivery Time: 7 working days
- Payment Terms: L/C, D/A, D/P, T/T, Western Union, MoneyGram
- Supply Ability: 1-10 units 15 - 20 working days, 10-30 units 20-30 working days, 30-50 units ≥30 working days

R·CHENG



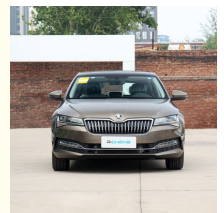
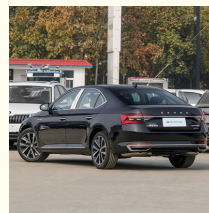
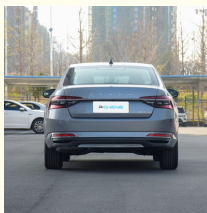
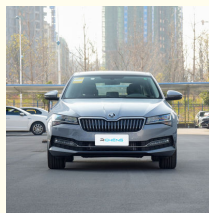
### Product Specification

- Color: Golden
- Steering: Left
- Fuel: Petrol
- Wheelbase: 2841mm
- Curb Weight: 1535kg
- Brake System: Front Disc+Rear Disc
- Maximum Torque(Nm): 320N·m
- Brand Name: Skoda Superb
- Transmission: DCT
- Daytime Light: LED
- Seats: 5 Seats
- Highlight: Superb Skoda Second Hand Cars, Superb Skoda Gasoline Vehicles, 210km/H Gasoline Vehicles

R·CHENG



### More Images



Our Product Introduction

### Product Description

#### Left Hand Drive Second-Hand Cars Superb Skoda Made In China Max 210km/H Gasoline Vehicles

Skoda Superb is a brand new B-class three box sedan launched by SAIC Volkswagen Skoda. As a "boutique mid to high-end sedan" under the Skoda brand, the Superb combines human technology, agile design, and exquisite craftsmanship to provide users with high-quality driving options.

In October 2022, Skoda's 2023 Superb was launched as the annual Modified Model, with upgrades to its exterior, interior details, and configuration to enhance product competitiveness.

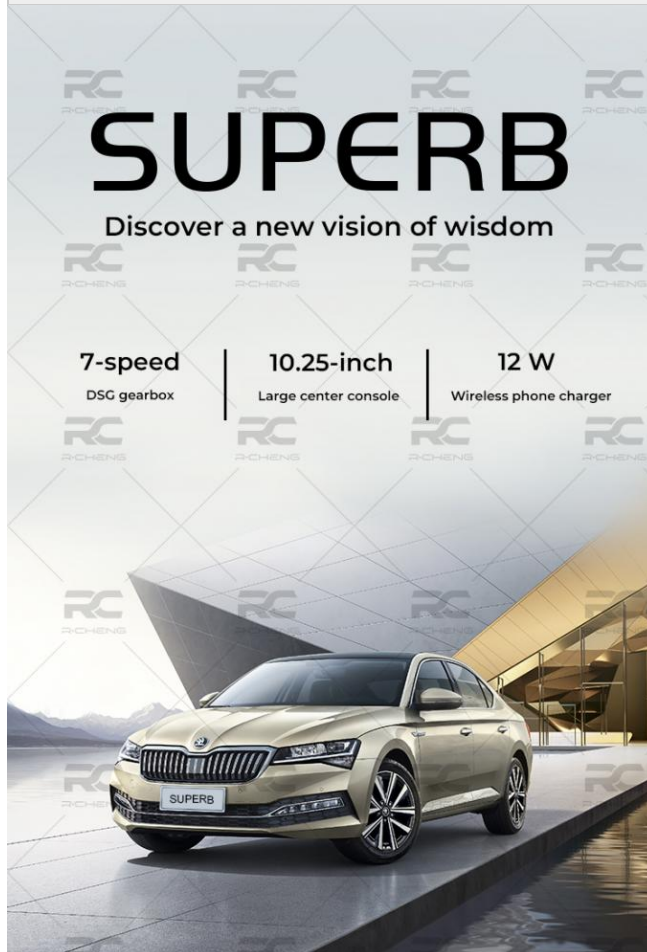
Manufacturer	Skoda Superb
Type	Sedan
Energy	Gasoline
Time to Market	2023.01
Engine	2.0T 186 horsepower L4
Max power	137(186Ps)

Max Torque	320 N.m
Gearbox	7-gear wet dual clutch
Lengh*width*height	4869x1865x1489mm
Body Structure	5-door 5-seat SUV
Max Speed	210km/h
Fuel consumption	6.1L/100km
Warranty	3 years or 100,000 km
Weight	1535kg
Fuel tank capacity	68.5L
Trunk Volume	570-1680
Displacement	2L
Air intake	turbo charging
No. of cylinders	4
Max horsepower	186Ps
Max Power	137kW
Max power speed	4150-6000rpm
ROZ	95#
Oil supply method	In cylinder direct injection
Drive	Front-engine, Front-wheel drive
Front suspension	MacPherson independent suspension
Rear suspension	Multi link independent suspension
Steering	Electric assistance
Parking Brake	Electronic
Tire	235/45 R18
ABS	Yes
tpms	Yes

## Skoda Superb Sedan

### Product Description

#### Skoda Superb Discover a New Vision of Wisdom



7-speed DSG gearbox  
10.25-inch Large center console  
12 W Wireless phone charger

#### Skoda Superb Stereo Crystal LED Lighting

## DISCOVER A NEW VISION OF WISDOM



Crystal LED intelligent headlights



Stereo crystal LED taillights



Chrome-plated tail trim design



Multi-functional perforated leather seats

Crystal LED intelligent headlights  
Stereo Crystal LED taillights  
Chrome-plated tail trim design  
Stereo crystal LED taillights  
Multi-functional perforated leather seats

### Skoda Superb Powerful Features

## DISCOVER A NEW VISION OF WISDOM



9.2" multimedia interactive system ▶  
7 speed DSG transmission ▼  
10.25" LCD digital meter ◀  
Wireless phone charger ▲



9.2" multimedia interactive system  
7 speed DSG transmission  
10.25" LCD digital meter  
Wireless phone charger

### Skoda Superb Car Inner Display

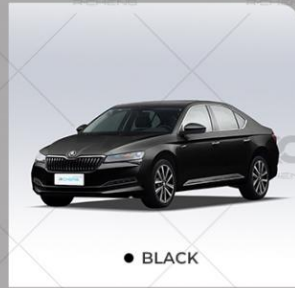
## CAR DISPLAY



interiors may vary

Skoda Superb Colors

## HOT SELLING COLORS SHOW



Skoda Superb Sedan has 4 hot selling colors, Brown, Black, Gray, Golden colors available.

The Superb is one of the top models of SAIC Volkswagen Skoda. The first Superb was put into production in 1934, with the code number 640. The body shape was relatively large, but due to cost reduction, the price was not as expensive as other cars in the same class at that time, and it achieved many success in sales. The last model in the Superb series, with the code number 919, was completely different from previous Superb models, using a large amount of new materials and processing technology, But the selling price has actually decreased.

After entering the 1990s, Skoda Automobile underwent multiple equity changes and eventually became a wholly-owned subsidiary of Volkswagen. From then on, Skoda began to leverage Volkswagen's technological advantages and management experience to restore its Superb to a high-quality and personalized image, making significant progress in quality and market promotion, and even becoming a world best-selling car.

Send a quote to get your best price for Skoda Superb here.

CHENGDU RUICHENG Chengdu Ruicheng Automobile Service Co., Ltd.

☎ 19158810053

✉ [mango@ruichengauto.com](mailto:mango@ruichengauto.com)

🌐 [electriccars-ev.com](http://electriccars-ev.com)

Hall 5, No. 1, Yinhe Road, Damian Street Chengdu City, Sichuan Province, China