

China Dongfeng Peugeot 508L 2022 400THP PureTech Passion Edition Car French Sedan Max Speed 230km/H Gasoline Vehicle

Our Product Introduction

Basic Information

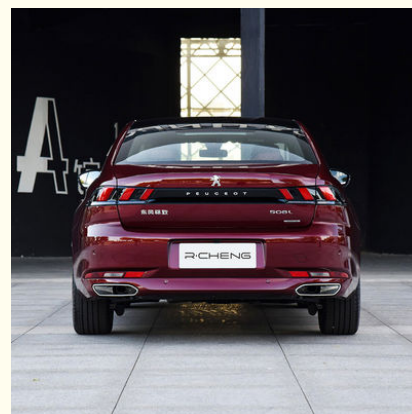
- Place of Origin: China
- Brand Name: Dongfeng
- Certification: VDA, TUV ,ISO
- Model Number: Peugeot 508L
- Minimum Order Quantity: 1
- Price: \$20288-28941/units
- Packaging Details: by sea, by trailer, rail via containers, LCL and RO-RO vessel
- Delivery Time: 7 working days
- Payment Terms: L/C, D/A, D/P, T/T, Western Union, MoneyGram
- Supply Ability: 1-10 units 15 - 20 working days, 10-30 units 20-30 working days, 30-50 units ≥30 working days

R·CHENG

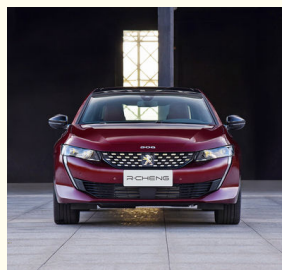


Product Specification

- Product Name: Dongfeng Peugeot 508L
- Steering: Left
- Color: Blue, White, Grey, Black
- Dimension: 4870x1855x1455MM
- Type: Sedan
- Seats: 5
- Highlight: 230km/H Gasoline Vehicle,
400THP Gasoline Vehicle,
PureTech Passion Edition Car



More Images



for more products please visit us on electriccars-ev.com

Product Description

China Dongfeng Peugeot 508L 2022 400THP PureTech Passion Edition Car French Sedan Max Speed 230km/H Gasoline Vehicle

The appearance of the new 508L adopts a brand new Lion Roar front face, which is inherited from the Peugeot concept car Instinct's frameless front grille and front bumper, combined with a shield shaped lion logo, making the entire front of the car more recognizable. The lion's eye LED matrix headlights and the "three claw" LED daytime running lights echo the lion's claw tailgate from afar.

In terms of color, the new 508L has added a white glazed gray body color scheme and a gray blue style interior. The brand new 18 inch dual color sports aluminum alloy wheels, dark gray design logo (rear, hood, fender GT), and dynamic tail wing design further highlight the sporty personality style.

In terms of configuration, the new 508L series comes standard with 8-way electric adjustment of the front seats, and the entire series is equipped with an upgraded Blue-i 3.0 intelligent networking system, natural speech recognition, and support for continuous commands; 360 ° panoramic high-definition reverse image+transparent chassis, which can be automatically triggered according to the scene; At the same time, it is equipped with active safety systems such as AR real-time navigation, night vision system, ADAS 2.0 intelligent driving assistance system, etc. In addition, the new 508L is also equipped with wireless fast charging function, foot sensing to open the trunk, and a Clean Cabinet air purification

Dongfeng Peugeot 508

Production Configuration

Manufacturer	Dongfeng Peugeot
Type	Sedan
Energy	Gasoline
Time to Market	2021.08
Engine	1.8T 211 horsepower L4
Max power	155(211Ps)
Max Torque	300 N.m
Gearbox	8-speed automatic manual transmission
Length*width*height	4870x1855x1455mm
Body Structure	4 doors and 5 seats Sedan
Max Speed	230km/h
Fuel consumption	6.1L/100km
Warranty	3 years or 100,000 km
Wheelbase	2848mm
Weight	1533kg
Fuel tank capacity	58L
Trunk Volume	513L
Displacement	1.8L
Air intake	turbo charging
No. of cylinders	4
Max horsepower	211Ps
Max Power	155kW
Max power speed	5500rpm
ROZ	92#
Oil supply method	In cylinder direct injection
Drive	Front-engine, Front-wheel drive
Front suspension	MacPherson independent suspension
Rear suspension	Multi link independent suspension
Steering	Electric assistance

Parking Brake	Electronic
Tire	235/45 R18
tpms	Yes
Seater Materials	Leather

Products Description

Dongfeng Peugeot 508 ADS 2.0



PEUGEOT 508L
 New French driving control flagship AMVAR
 ADAS 2.0 Adjustable independent suspension assistance systems
 Intelligent driver Nappa
 Leather Heated Seat

Dongfeng Peugeot 508 LED Headlight

SHARP EDGE DESIGN

Understand my fashionable feeling never forget the lion soul aesthetics



Tusk-type LED daytime running light



LED lion paw tail light



18-inch two-color aluminum alloy rims

SHARP EDGE DESIGN

Understand my fashionable feeling never forget the lion soul aesthetics

Tusk-type LED daytime running light

LED lion paw tail light

18-inch two-color aluminum alloy rims

Dongfeng Peugeot 508 All Sensory Cockpit

I-COCKPIT IS AN ALL-SENSORY COCKPIT

Understand my senior sense, the luxury experience at your fingertips



I-COCKPIT IS AN ALL-SENSORY COCKPIT Understand my senior sense, the luxury experience at your fingertips
Surround type atmosphere lamp
i-Cockpit is an all-sensory cockpit.
NAPPA leather heated seat
12.3-inch LCD dashboard
FOCAL HiFi Sound system

Dongfeng Peugeot 508 Intuitive Driving Control

INTUITIVE DRIVING CONTROL

Understand my push back feeling a step on the surging power of addiction



Multi-function racing wheel



AMVAR variable Independent
suspension & five link
independent suspension



Master of CLDR chassis tuning



400 THP turbocharged direct injection engine &
imported Aisin 8-speed hand automatic transmission



Electronic shift lever

INTUITIVE DRIVING CONTROL

Understand my push back feeling a step on the surging power of addiction

Multi-function racing wheel

AMVAR variable Independent
suspension & five link
independent suspension

Master of CLDR chassis tuning

400 THP turbocharged direct injection engine &
imported Aisin 8-speed hand automatic transmission

Electronic shift lever

FLAGSHIP QUALITY

Know my sense of security want I think all the time guard



Clean Cabin air purification system



ADAS 2.0 intelligent driving



ACC Adaptive Cruise Control System



City Park 4 Fully automatic parking



High strength body steel frame



Airbags and curtains

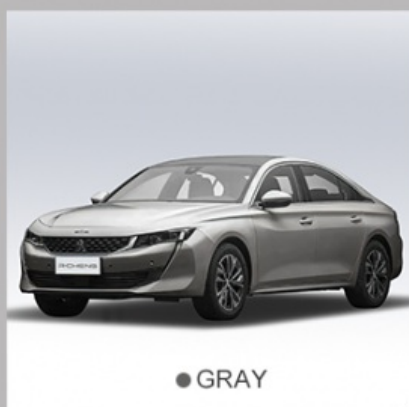
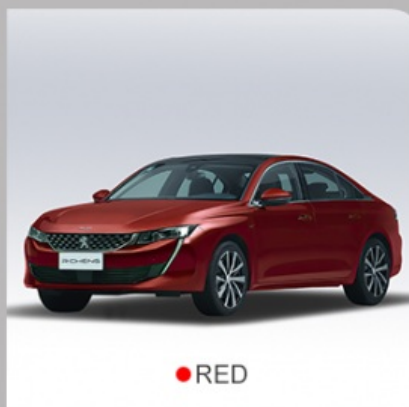
FLAGSHIP QUALITY

Know my sense of security want I think all the time guard

lean Cabin air purification svsten
 City Park 4 Fully automatic parking
 DAS 2.0 intelligent driving
 High strength body steel frame
 CC Adaptive Cruise Control Svster
 Airbags and curtains

Dongfeng Peugeot 508 Colors

HOT SELLING COLORS SHOW



222

CHENGDU Chengdu Ruicheng Automobile Service Co., Ltd.



19158810053



mango@ruichengauto.com



electriccars-ev.com

Hall 5, No. 1, Yinhe Road, Damian Street Chengdu City, Sichuan Province, China