

GWM Shanhaipao Pickup Truck 500 N.M Torque 48V Light Hybrid Gasoline Diesel Oil

Our Product Introduction

for more products please visit us on electriccars-ev.com

Basic Information

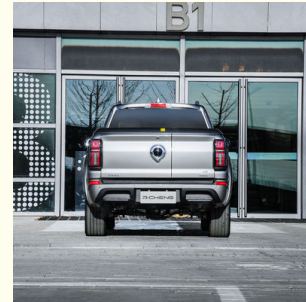
- Place of Origin: China
- Brand Name: GWM
- Certification: VDA, TUV ,ISO
- Model Number: Shanghai Cannon Pickup
- Minimum Order Quantity: 1
- Price: \$30000-38000/units
- Packaging Details: by sea, by trailer, rail via containers, LCL and RO-RO vessel
- Delivery Time: 7 working days
- Payment Terms: L/C, D/A, D/P, T/T, Western Union, MoneyGram
- Supply Ability: 1-10 units 15 - 20 working days, 10-30 units 20-30 working days, 30-50 units ≥30 working days

R·CHENG

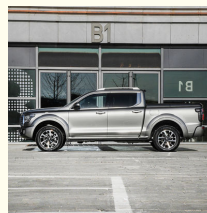
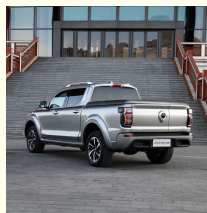
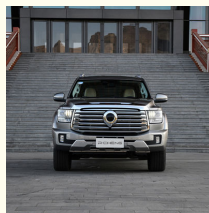


Product Specification

- Product Name: GWM Shanghai Cannon Pickup
- Length * Width * Height: 5440x1991x1924mm
- Torque: 480-500N·m
- Color: Red
- Engery: Diesel Oil, 48V Light Hybrid
- Max Speed: 155-185km/h
- Highlight: GWM Shanghai Cannon Pickup Truck, 500NM Torque Shanghai Cannon Pickup, 48V Light Hybrid Gasoline Pickup



More Images



Product Description

GWM Shanhaipao Pickup Truck 500 N.M Torque 48V Light Hybrid Gasoline Diesel Oil Import Chinese Pickup

Shanghai Cannon is a pickup truck under the Great Wall Moter Cannon brand.

Shanghai Cannon is positioned as a large-scale high-performance luxury pickup truck, which is a masterpiece of the Great Wall Cannon brand's 2.0 era category innovation. Equipped with a globally leading high-performance power system, it has an ultra luxurious high-end business cabin and an ultra fun and versatile expansion space, making it the true king of outdoor activities. With unparalleled traversal ability, versatile modification ability, outstanding towing ability, and full scene leisure adaptability, Shanghai Cannon has become the king of traversal, modification, towing, and leisure, meeting users' longing for outdoor life and everything in the mountains and seas

Product Description

Our Product Introduction

GWM

SHAN HAI CANNON

Large high performance luxury pickup truck

9AT
speed changer

3.0T V6 gasoline
2.4T diesel
dynamical system

4A+MLOCK
AWD



HIGH PERFORMANCE ACROSS THE MOUNTAINS AND OCEANS



3.0T V6 dual supercharged
gasoline engine



2.4T diesel engine



Suspension upgrade
precision adjustment



Triple lock



Control the sea freely



More efficient, smoother
9AT transmission



Ultra-high strength body

SUPER LUXURY ENJOY
THE MOUNTAINS AND SEA



Powerful and stylish, like a peak



LED dazzling headlamp, the edge of highlights



Strong waist line, tough body



TEXTURED INTERIOR

14.6 "full touch screen, 12.3" digital instrument,
high-quality brand audio, using technology to link
people, cars, life, sit and enjoy the audio-visual feast,
wonderful at your fingertips



Premium luxury quality cabin



Extreme comfort ride experience



Extra-large skylight



Ultra-quiet design



VARIABLE CAR BOX



Domestic initiative rear door design



Three door flat cover type awning



Double 220V power supply



Drag-and-drop version



multifunction



HOT SELLING COLORS SHOW



Specification

| | |
|--------------------------|------------------|
| Max. Speed (km) | 180KM/H |
| Length*Width*Height (mm) | 5440x1991x1924mm |

| | |
|--|---|
| Wheelbase (mm) | 3350mm |
| Body Structure | 5 seats, 5 doors |
| Tire Specification | 265/60 R18 |
| Driving Mode | Front-engine Front-wheel drive layout FF |
| Fuel Oil Type | 92# Gasline |
| General Oil Consumption (NEDC) | 11.6L |
| Tank Capacity (L) | 80L |
| Displacement (L) | 3L |
| Valve Mechanism | DOHC |
| Fuel | Gas/Petrol |
| Engine Type | Dual Turbo |
| Cylinders | 6 |
| Air Intake Type | Turbocharger |
| Front Suspension | Double fork arm independent suspension |
| Rear Suspension | Integral bridge type non-independent suspension |
| Forward Shift Number | 9 |
| Maximum Torque(N·m) | 500N·m |
| Sunroof Type | Openable Panoramic Sunroof |
| Sensory Trunk | Yes |
| Number of Seats | 5 |
| Lane Dispatch Warning System | Yes |
| Cruise System | Yes |
| Drive | Timely four-wheel drive(Automatic) |
| Steering System | Electric |
| Parking Brake | Electric |
| Brake System | Front disc+Rear disc |
| Tire Size | R18 |
| Airbags | 6 |
| TPMS(Tire Pressure Monitor System) | Yes |
| ABS(Antilock Braking System) | Yes |
| ESC(Electronic Stability Control System) | Yes |
| Radar | Front 4+Rear 2 |
| Rear Camera | 360° |
| Cruise Control | ACC |
| Sunroof | Panoramic sunroof |
| Roof rack | Aluminium alloy |
| Steering Wheel | Multi-function |
| Seats Material | Imitation Leather |
| Interior Color | Dark/Orange |
| Driver's Seat Adjustment | Electric |
| Copilot Seat Adjustment | Electric |
| Touch Screen | Yes |
| Car Entertainment System | Yes |
| Air Conditioner | Automatic |
| Headlight | LED |
| Daytime Light | LED |
| Front Window | Electric |
| Rear Window | Electric |
| Exterior Rearview Mirror | Electric adjustment |
| Vehicle Weight (kg) | 2565kg |
| General Oil Consumption (NEDC) | 11.6L |
| Vehicle Warranty | 3 Years/ 100,000 KM |

2023 Great Wall Shanghai Cannon GWM Cannon Passenger Version 2.4T Diesel 3.0T Gasoline Version Optional In Stock



19158810053



mango@ruichengauto.com



electriccars-ev.com

Hall 5, No. 1, Yinhe Road, Damian Street Chengdu City, Sichuan Province, China