

Pickup Changcheng Pao GWM Cannon 2.0T Gasoline Diesel Oil Red Blue White Silver Black

Our Product Introduction

for more products please visit us on electriccars-ev.com

Basic Information

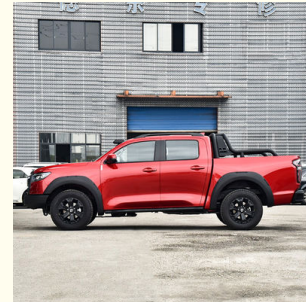
- Place of Origin: China
- Brand Name: GWM
- Certification: VDA, TUV ,ISO
- Model Number: Changcheng Pao GWM Cannon
- Minimum Order Quantity: 1
- Price: \$16000-21000/units
- Packaging Details: by sea, by trailer, rail via containers, LCL and RO-RO vessel
- Delivery Time: 7 working days
- Payment Terms: L/C, D/A, D/P, T/T, Western Union, MoneyGram
- Supply Ability: 1-10 units 15 - 20 working days, 10-30 units 20-30 working days, 30-50 units ≥30 working days

R·CHENG

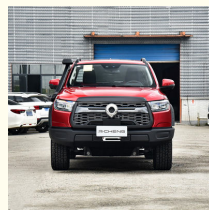


Product Specification

- Product Name: Changcheng Pao Pickup
- Length * Width * Height: 5416x1947x1886mm
- Torque: 360N·m
- Color: 5 Colors
- Engery: Gasoline, Diesel Oil
- Max Speed: 168km/h
- Highlight: Changcheng Pao GWM Cannon, Changcheng Pao Pickup 2.0T, Gasoline Changcheng Pao Pickup



More Images



Our Product Introduction

Product Description

High Quality Cost-Effective Pickup Changcheng Pao GWM Cannon 2.0T Gasoline And Diesel Oil Red Blue White Silver Black

Changcheng Pao GWM Cannon is closer to that of the Big Brother shanghai Cannon, and there are also brand new 18 inch wheels with a wide range of options. From an overall design perspective, **GWM Cannon pickup** is still a typical pickup truck, but the level of detail handling is no less exquisite than many SUV or sedan models. Coupled with its domineering posture, the overall design is quite successful.

Specification

Manufacturer	GWM
Type	Pickup
Energy	Gasoline/Diesel Oil
Time to Market	2023.04
Engine	2.0T 190 horsepower L4
Max power	140(190Ps)

Max Torque	360 N.m
Gearbox	8-speed automatic manual transmission
Lengh*width*height	5416x1947x1886mm
Body Structure	4-door 5-seat Pickup
Max Speed	168km/h
Fuel consumption	9.9L/100km
Warranty	3 years or 100,000 km
Wheelbase	3230mm
Weight	2060kg
Fuel tank capacity	80L
Trunk Volume	1520x1520x540mm
Displacement	2.0L
Air intake	turbo charging
No. of cylinders	4
Max horsepower	190Ps
Max Power	140kW
Max power speed	4000-5500rpm
ROZ	92#
Oil supply method	In cylinder direct injection
Drive	Front all-wheel drive
Front suspension	Double wishbone independent suspension
Rear suspension	Integral bridge non independent suspension
Steering	Electric assistance
Parking Brake	Electronic
Tire	265/60 R18
ABS	Yes
tpms	Yes

Product Description



GWM CANNON
Global smart luxury pickup truck
18 inch aluminum alloywheel
L2+Level Intelligent drivingassistance level
4WD Four-wheeldrive form

LUXURY EXPERIENCE



Luxury car body



Sharp Hawk-eye LED headlights



18 "aluminum alloy wheels



Matrix intake grille



7 inch LCD instrument panel +
12.3 inch smart central control



Leather steering wheel

LUXURY EXPERIENCE

Luxury car body

18 "aluminum alloy wheels

7 inch LCD instrument panel +12.3 inch smart central control

Sharp Hawk-eye LED headlights

Matrix intake grille

9Leather steering wheel

INTELLIGENT



Reevolution of higher intelligence



Mobile phone Bluetooth key



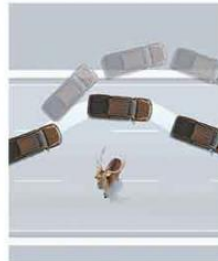
a new generation of car networking



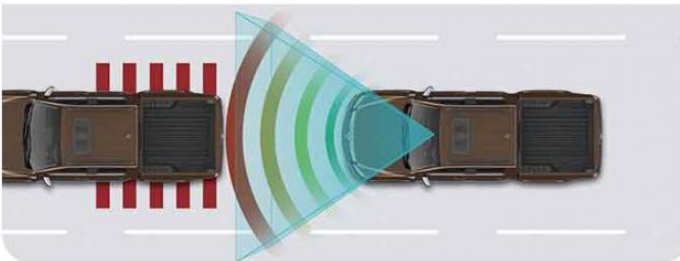
L2+ level intelligent driving control



Fully automatic parking system



Tired driving reminder



Low speed emergency braking, Intelligent emergency call

INTELLIGENT

Reevolution of higher intelligence

Mobile phone Bluetooth key







a new generation of car networking

Fully automatic parking system

L2- level intelligent driving control

Tired driving reminder

Low speed emergency braking, Intelligent emergency call

	<p>INTELLIGENT</p> <p>MORE HEART-WARMING</p> <p>New steering wheel heating, front seat heating, automatic air conditioning, automatic headlights, four-door one-button upgrade & anti-clip & automatic window closing</p>
<p>MORE COMFORTABLE</p> <p>The only 50W wireless fast charge and other intimate equipment, so that users sit down, comfortable</p>	
	<p>MORE CONVENIENT</p> <p>Domestic initiative concealed cargo box board pedal</p>
<p>LESS WORRY</p> <p>Delivery box electronic lock</p>	
	<p>UNLIMITED MODIFICATION POTENTIAL</p> <p>Reserve 3 (engine room/cabin/cargo box) modification wiring harness interfaces to meet various modification requirements</p>
<p>2.5 TON TRACTION QUALIFICATION</p> <p>The original factory has tow qualification, can tow RV, motorcycle, etc</p>	

INTELLIGENT

MORE COMFORTABLE

The only 50W wireless fast charge and other intimate equipment, so that users sit down, comfortable

LESS WORRY Delivery box electronic lock

2.5 TON TRACTION QUALIFICATION

The original factory has tow qualification can tow RV, motorcycle, etc

MORE HEART-WARMING New steering wheel heating, front seat heating, automatic air conditioning, automatic headlights, four-door one-button upgrade & anti-clip & automatic window closing

MORE CONVENIENT Domestic initiative concealed cargo box board pedal

UNLIMITED MODIFICATION POTENTIAL

Reserve 3 (engine room/cabin/cargo box) modification wiring harness interfaces to meet various modification requirements

IMPETUS

2.0T
ENGINE



IMPETUS

2.0T+8AT
GOLD POWER
COMBINATION



2.0T ENGINE
2.0T+8AT GOLD POWER COMBINATION

HOT SELLING COLORS SHOW



● BLACK



○ WHITE



● RED



● BLUE



● SILVER

HOT SELLING COLORS SHOW
BLACK,WHITE,RED,BLUE,SILVER

High Quality Cost-Effective Pickup Changcheng Pao GWM Cannon 2.0T Gasoline And Diesel Oil Red Blue White Silver Black

In terms of space, for passengers who are 175cm tall, the rear seats can provide sufficient legroom and headroom. And unlike many pickup truck models, its rear seat cushions are more solidly padded. Although the backrest is not very inclined, it has been tilted as much as possible. Coupled with good lumbar support, long-distance riding is much more comfortable than most pickup truck models.

In terms of power, the power reserve of the 2.0T engine drives this big guy, which is not particularly abundant, but there is no obvious feeling of insufficient use. The overall power tuning is very smooth and does not emphasize explosive power, but the gradual power output still gives people confidence in overtaking. The 8AT transmission is also very diligent and responsible, with a low sense of daily driving experience and a slower downshift response compared to traditional household models.

No guidance, sufficient to meet the needs of daily driving.

In terms of chassis, the biggest difference between this car and most household positioning models is that its steering wheel turns a bit more, which can be clearly detected when turning around. But in addition, its steering feel and accuracy are all well done, without any obvious blurring or difficulty in handling. In terms of suspension, this car adopts a five link rear suspension structure. Compared to traditional steel plate springs, it can more effectively suppress tail bounce and filter out fine and complex bumps. Of course, it still needs to take care of necessary support first, so the subjective feeling may be hard.

However, the advantage is that the body posture is very stable, and there is no unnecessary jumping or swinging, giving people a strong sense of peace of mind. Send a message here to get your best price for a **Cost-Effective Pickup**

Changcheng Pao GWM Cannon



Chengdu Ruicheng Automobile Service Co., Ltd.



19158810053



mango@ruichengauto.com



electriccars-ev.com

Hall 5, No. 1, Yinhe Road, Damian Street Chengdu City, Sichuan Province, China