

Left Hand Toyota CH-R EV Chr SUV Electric SUV Import Japanese Car

Our Product Introduction

Basic Information

- Place of Origin: China
- Brand Name: Toyota
- Certification: VDA, TUV, ISO
- Model Number: CH-R EV
- Minimum Order Quantity: 1
- Price: \$22000-24000/units
- Packaging Details: by sea, by trailer, rail via containers, LCL and RO-RO vessel
- Delivery Time: 7 working days
- Payment Terms: L/C, D/A, D/P, T/T, Western Union, MoneyGram
- Supply Ability: 1-10 units 15 - 20 working days, 10-30 units 20-30 working days, 30-50 units ≥30 working days

R·CHENG

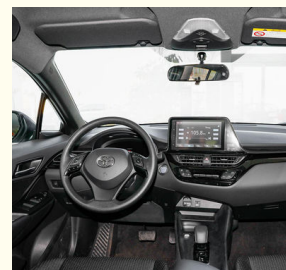
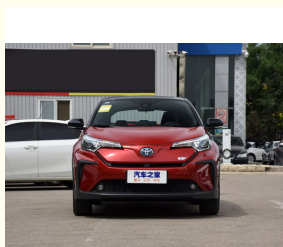


Product Specification

- Product Name: Toyota CH-R EV SUV
- Fuel: 100% Electric
- Length * Width * Height: 4405x1795x1575 Mm
- Steering: Left
- Battery Type: Ternary Lithium Battery
- Max Speed: 160km/h
- Highlight: Left Hand Toyota CH R EV SUV, 160km/h Electric SUV, 160km/h Toyota CH-R EV SUV



More Images



for more products please visit us on electriccars-ev.com

Product Description

Introducing the **Toyota CH-R Electric SUV** - a game-changing zero-emission vehicle that combines style and practicality. With its sleek design and advanced technology, the CH-R Electric SUV is primed to redefine your commute, whether you're zipping through city streets or traversing the open road. Enjoy the ultimate in silent, emission-free motoring with the Toyota CH-R Electric SUV.

Left Hand Toyota CH-R EV Hot Sale Chr SUV Electric SUV Import Japanese Car Made In China Factory At Wholesale Price, **ship Toyota chr cars from China factory to worldwide**. Send a message online to get the best wholesale price.

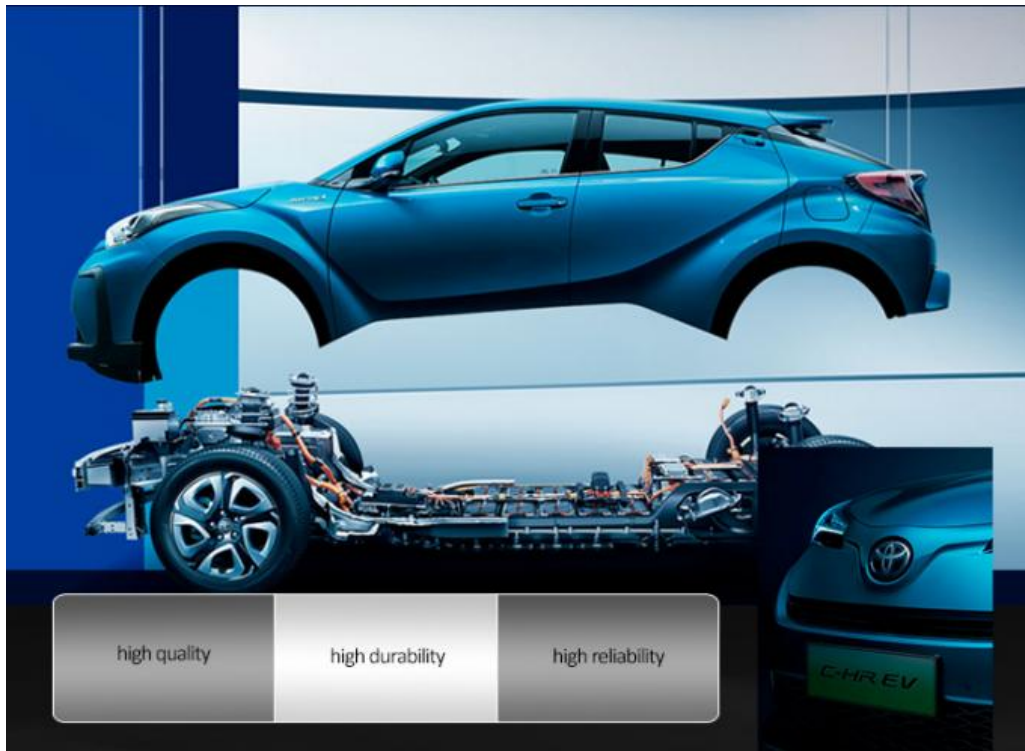


TOYOTA C-HREV

The combination of appearance and performance

400km NEDC endurance mileage	12.3-Inch multifunctional dashboard	10N·m SRS airbags
------------------------------------	--	----------------------

The advertisement features a side profile of a blue Toyota C-HREV SUV against a light gray background. The car is shown from the rear left side, highlighting its sleek design and charging port. The text is arranged in a clean, modern layout with a blue and white color scheme.



Racing with wind, free
from inhibitions



Extraordinary configura-
tion, unique cabin



Chassis with TNGA
structure, low car
center of gravity





LTA lane tracking assistance system



PCS pre-collision safety system



High-strength steel architecture



12.3-inch color multifunctional information display

HOT SELLING COLORS SHOW



Product Configuration

Battery Capacity	54.3 kWh
------------------	----------

Charging Time	Fast Charge 0.83 Hours
Motor Power	150(204Ps)
MAX. Range	400 km
MAX. Speed	160 km/h
Vehicle Weight	1780 kg
Tyre Specifications	215/60 R17
Length*Width*Height	4405x1795x1575 mm
Driving Direction	Left-hand Drive
Body Structure	5 Doors, 5 Seats
Battery Type	Ternary lithium battery
Steering Wheel Assistance	Electric Steering Wheel Assist
Light Type	LED
Battery Warranty	100,000 km/ 3 years
Motor Torque	300 N·m
Seat	5
Front Suspension	McPherson Independent Suspension
Rear Suspension	Double wishbone independent suspension
Steering System	Electric
Parking Brake	Electric
Braking System	Front Disc +Rear Disc
ABS	Yes
ESC	Yes
Radar	Rear
After The Camera	Astern image
Skylight	Panoramic Sunroof
Steering Wheel	Multi-function
Seat Material	Fabric
Driver Seat Adjustment	Electric
Passenger Seat Adjustment	Electric
Touch Screen	Yes

Toyota CH-R EV

Left Hand Toyota CH-R EV Hot Sale Chr SUV Electric SUV Import Japanese Car Made In China Factory At Wholesale Price, **ship Toyota chr cars from China factory to worldwide**. Send a message online to get the best wholesale price.



19158810053



mango@ruichengauto.com



electriccars-ev.com

Hall 5, No. 1, Yinhe Road, Damian Street Chengdu City, Sichuan Province, China