

2023 SAIC MG7 Petrol Cars In Stock 1.5/2.0T 5 Doors 5 Seats FWD New Cars MG7 In Stock

Our Product Introduction

for more products please visit us on electriccars-ev.com

Basic Information

- Place of Origin: China
- Brand Name: MG
- Certification: VDA, TUV ,ISO
- Model Number: MG 7 MG ZS MG 6
- Minimum Order Quantity: 1
- Price: \$15,500-15,800/units
- Packaging Details: by sea, by trailer, rail via containers, LCL and RO-RO vessel
- Delivery Time: 7 working days
- Payment Terms: L/C, D/A, D/P, T/T, Western Union, MoneyGram
- Supply Ability: 1-10 units 15 - 20 working days, 10-30 units 20-30 working days, 30-50 units ≥30 working days

R·CHENG

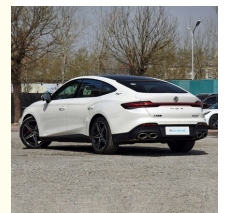
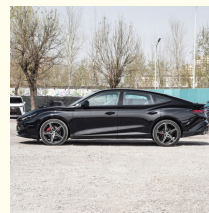
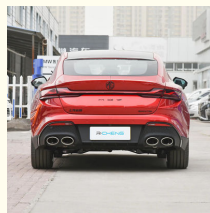


Product Specification

- Brand: MG
- Model: MG 7
- Color: White, red, black, Grey, Green
- MOQ: 1 Unit
- Fuel: Gas/Petrol
- Seats: 5 Seats SUV
- Highlight: 2023 SAIC MG7 Petrol Cars, 5 Seats FWD New Cars, 2.0T 5 Doors FWD Cars



More Images



Our Product Introduction

Product Description

The MG7 is a noteworthy midsize luxury sedan that blends modern design with business and family functionality, showcasing a mature and a steady temperament.

In terms of exterior design, the MG7 features sleek body lines, a large chrome-accented front fascia, and an all-LED headlamp assembly and a bold front bumper that give the entire vehicle an imposing look. The natural upsweep of the side lines complements the rear design, while the unique U-shaped LED taillights stand out particularly at night.

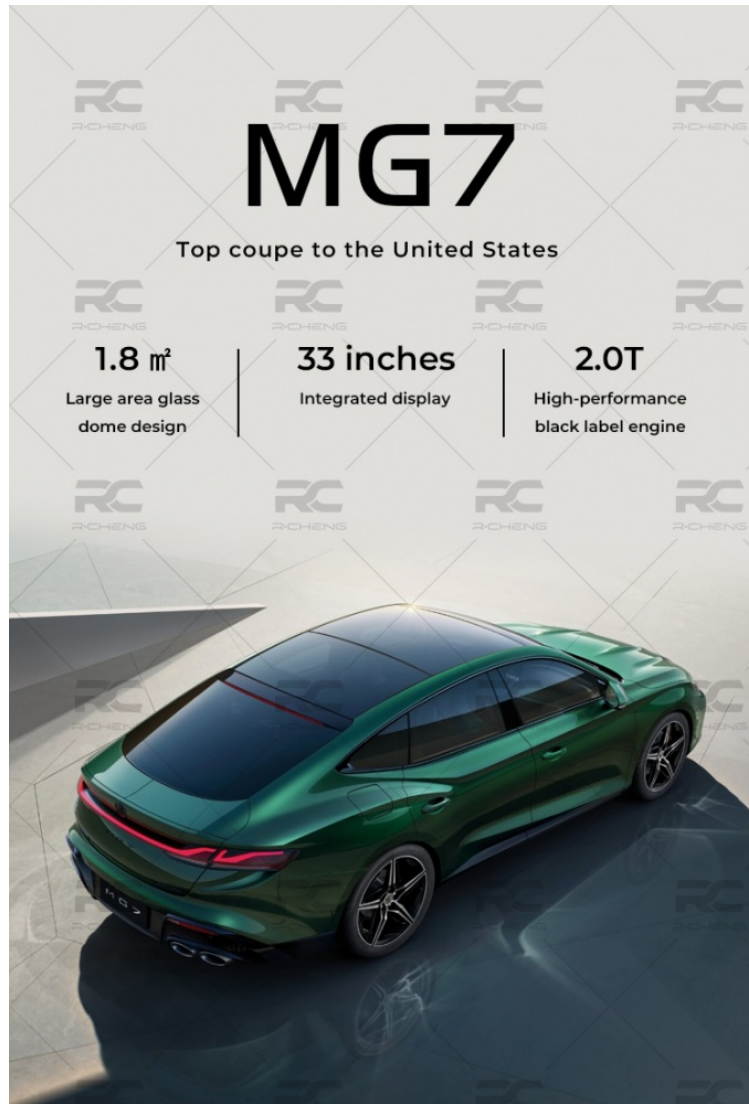
As a luxury sedan, the MG7 features a spacious and comfortable interior. The front seats provide just the right amount of support, while the dashboard design is luxurious and liberal. The interior is equipped with a 10.1-inch central touchscreen that supports various connectivity options like CarPlay and Baidu CarLife. The rear seating area provides ample space for adult passengers to sit comfortably. Additionally, the MG7 has a practical storage space, with a front center console volume of 10.8L and ample space under the rear seats.

In terms of powertrain, the MG7 is equipped with a 2.0T engine that delivers a maximum power of 192kW and a peak torque of 405 N·m. It is matched with either a 9-speed automatic or a 6-speed dual-clutch transmission. During driving, you can feel the powerful acceleration of the MG7, its quick response to speed changes, and the exceptional overall performance of the vehicle. The car is also equipped with various safety features like electronic stability control and traction control, providing effective protection for driving safety.

In terms of fuel economy, according to official data, the 2.0T manual transmission model has a combined fuel consumption of 6.2L/100km, while the dual-clutch transmission model has a combined fuel consumption of 6.94L/100km. Considering its

powerful performance, this fuel consumption rate is quite impressive.

Overall, the MG7, with its fashionable design, luxurious interior, powerful performance, and relatively low fuel consumption, has won the favor of consumers. It is a worthwhile choice whether for family or business use. Send a message online to get your best price. Buy a MG 7 today.



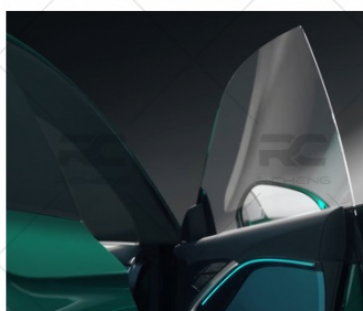


EMP LED THROUGH TAILLIGHT

Visually further stretch the vehicle length, making the body more slender and elegant

TRUE TWO SIDES OUT OF THE TAIL ROW

Double side exhaust sound
wave atmosphere feeling
stronger



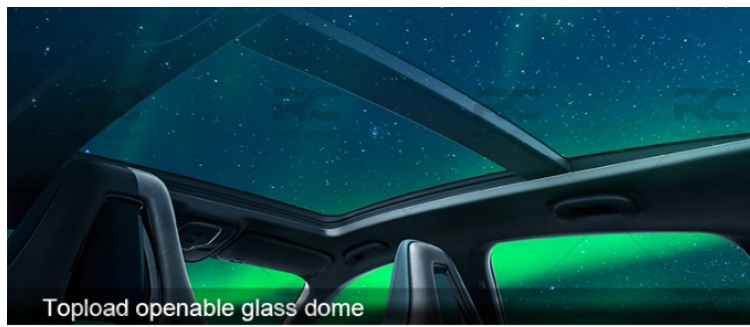
SUPERCAR STYLE FRAMELESS DOOR

Appearance level high
soundproof wide field of view

19-INCH TWO-COLOR PEAK SHADOW SHUTTLE WHEELS

1 Wheel shape bold, fashion,
with red sports calipers





Topload openable glass dome



Super Luxury experience everything at your fingertips



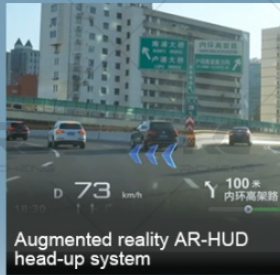
Storm Eye all-in-one motorsport seat



Qualcomm Snapdragon 8155
flagship car gauge chip



33-inch integrated display



Augmented reality AR-HUD
head-up system



2.0T engine



9 speed manual integrated transmission



E-LSD electronic limited slip differential



CAR DISPLAY



interiors may vary

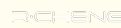
HOT SELLING COLORS SHOW



Specification

Max. Speed (km)	210KM/H
Length*Width*Height (mm)	4884x1889x1447mm
Wheelbase (mm)	2778mm
Body Structure	5 seats, 5 doors
Tire Specification	245/40 R19
Driving Mode	Front-engine Front-wheel drive layout FF
Fuel Oil Type	92# Gasline
General Oil Consumption (NEDC)	6.2L
Tank Capacity (L)	65L
Displacement (L)	2.0T
Valve Mechanism	DOHC
Fuel	Gas/Petrol
Engine Type	Turbo
Cylinders	4
Air Intake Type	Turbocharger
Front Suspension	Macpherson type independent suspension
Rear Suspension	Multi-link independent suspension
Forward Shift Number	7 speed AMT
Maximum Torque(N·m)	405N·m
Sunroof Type	Panoramic
Sensory Trunk	Yes
Number of Seats	7
Lane Dispatch Warning System	Yes
Cruise System	Yes
Drive	FWD
Steering System	Electric
Parking Brake	Electric

Brake System	Front disc+Rear dsic
Tire Size	245/40 R19
Airbags	6
TPMS(Tire Pressure Monitor System)	Yes
ABS(Antilock Braking System)	Yes
ESC(Electronic Stability Control System)	Yes
Radar	12 ultrasonic radars + 5 millimeter wave radars (Optional)
Rear Camera	360°
Cruise Control	ACC
Sunroof	Panoramic sunroof
Roof rack	Aluminium alloy
Steering Wheel	Multi-function
Seats Material	Geniune Leather
Interior Color	Dark/Blue
Driver's Seat Adjustment	Electric
Copilot Seat Adjustment	Electric
Touch Screen	Yes
Car Entertainment System	Yes
Air Conditioner	Automatic
Headlight	LED
Daytime Light	LED
Front Window	Electric
Rear Window	Electric
Exterior Rearview Mirror	Electric adjustment
Vehicle Weight (kg)	1570kg
Vehicle Warranty	3 Years/ 100,000 KM



Chengdu Ruicheng Automobile Service Co., Ltd.



19158810053



mango@ruichengauto.com



electriccars-ev.com

Hall 5, No. 1, Yinhe Road, Damian Street Chengdu City, Sichuan Province, China